

用户手册

USER GUIDE

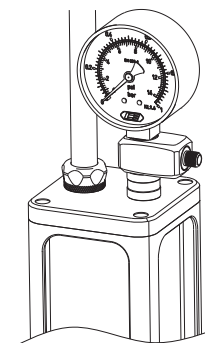
ICE-LT10

水冷系统测漏工具
Liquid Cooling System
Leak Tester

配件清单Contents

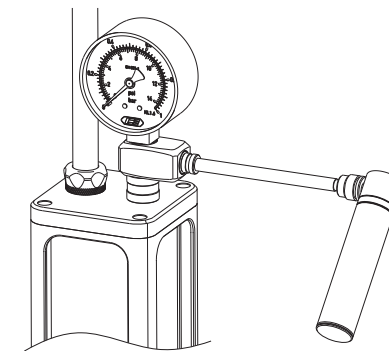


STEP1



将测漏仪接到水冷系统上（推荐接在水箱上）。
注意：必须在没有水冷液的情况下使用！
Connect the leak detector to the liquid cooling system. (recommended to the Reservoir).
Note: Must be used without Coolant!

STEP2



将打气筒用连接管接在测漏仪上。
Connect the Air pump to the leak detector with a connecting pipe.



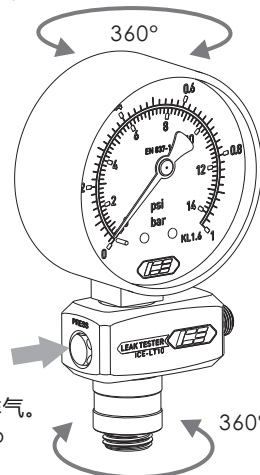
本产品不含高压气体！
This product does not contain high pressure gas!
充气禁止超过压力表绿色量程(0.6bar-0.8bar)，
否则将会导致水冷系统配件损坏！
Don't exceed the pressure gauge green range (0.6bar-0.8bar). Exceeding this will damage the liquid cooling system accessories!

本产品仅适合电脑水冷系统测漏使用，请咨询合格的技术人员进行安装，不正确的使用可能会导致设备损坏。Icemancooler 对这些产品的使用及其安装不承担任何明示或暗示的责任。以下说明如有更改，恕不另行通知。请访问我们的网站获取更新。

This product is only suitable for leak detection of computer water cooling system. Improper installation may cause damage to your equipment. Icemancooler assumes no liability whatsoever, expressed or implied, for the use of these products, nor their installation. The following instructions are subject to change without notice. Please visit our web for up to date information.

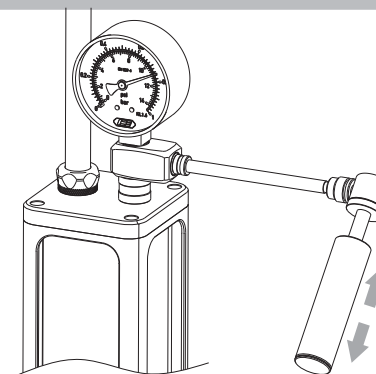
NOTE

1. 仪表和接头均可以转动360度。
Both the meter and connector
can be turned 360°.



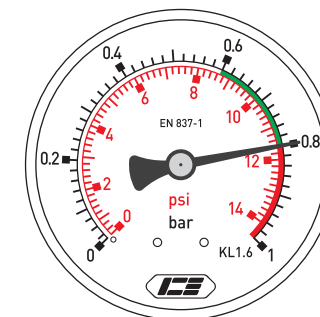
2. 按压按键可以快速排气。
Press the button to
quickly exhaust.

STEP3



用打气筒往水冷系统里打气，使压力达到0.6bar(8.8psi)-0.8bar(11.6psi)之间。
注意：压力不能超过1bar
Inflate the water cooling system with the pump to make the pressure reach 0.6 bar (8.8 psi) to 0.8 bar (11.6 psi).
Note: the pressure cannot exceed 1bar

STEP4



观察压力表指针是否有减小的变化，如有请检查水冷系统各个连接处是否安装好。
Observe whether the pressure gauge pointer has a reduced change, if so, please check whether the various connections of the liquid cooling system are installed properly.