

# 用户手册 USER GUIDE

## CPU 水冷头 CPU WATER BLOCK ICE-CT3

### 注意事项

1. 请将本产品放置及储存于小孩可接触的范围之外。
2. 安装前请检查产品状况及零件数量，如有任何问题，请联系您所购买的商店以提供换货或退货服务。
3. 本产品请由合格的技术人员进行安装。不正确的安装可能会导致设备损坏。Icemancooler不承担任何不当使用及安装造成的责任。
4. 本产品的保修封条一旦撕开或移除则保修立即失效，Icemancooler将不对此产品提供保修。
5. 本产品保修期限为二年。
6. 本手册如有更改恕不另行通知，请访问我们的网站获取更新。

### Precautions

1. Kee and store the product away from the reach of children.
2. Check the condition and component list of the product, If there is any problem, contact shop where you purchased to get a replacement or refund.
3. This product must be installed by qualified technicians. Incorrect installation may cause damage to the equipment. Icemancooler does not assume any responsibility for improper use and installation.
4. Breaking the warranty seal on the product will result in loss of warranty.
5. Product warranty period is two years.
6. This guide is subject to change without notice, Please browse our website for updates.

### Contents(部件):



**A** Water Block x1  
水冷头 x1



**B** Intel Backplate x1  
Intel 背板 x1



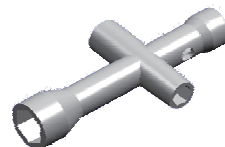
**C** Mounting screws x4  
安装螺丝 x4



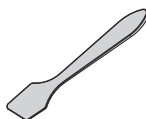
**D** Washer (Black) x4  
垫片(黑色) x4  
Dim: 5x10x1mm



**E** Spring x4  
弹簧 x4



**F** Wrench x1  
扳手 x1

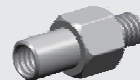


**G** Scraper x1  
刮刀 x1



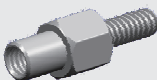
**H** Thermal Grease x1  
导热硅脂 x1

#### LGA20XX



**I** LGA20XX Screw x4  
LGA20XX 螺丝 x4

#### AMD LGA115X/1200/1700/1851



**J** Screw (螺丝) x4  
AMD & LGA115X/1200/1700/1851

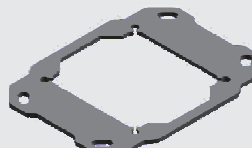


**K** Washer (Black) x4  
垫片(黑色) x4  
Dim: 4x8x3mm

#### AMD AM4/AM5



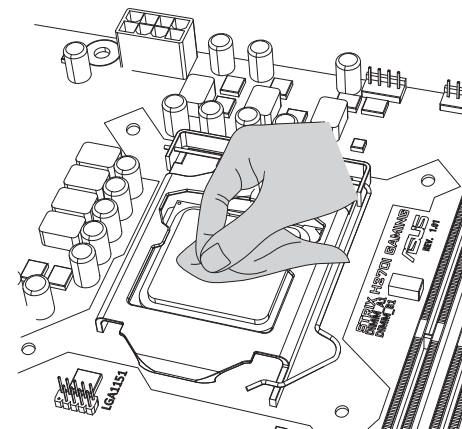
**L** AMD Washer (White) x4  
AMD 垫片(白色) x4  
Dim: 6x9x4mm



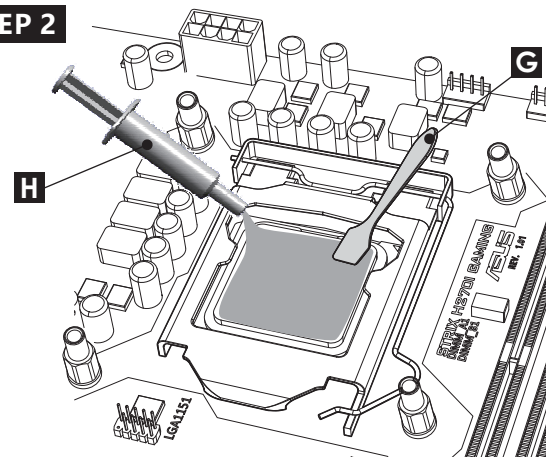
**M** AMD Bracket x1  
AMD 支架 x1

### Before Installation(安装前):

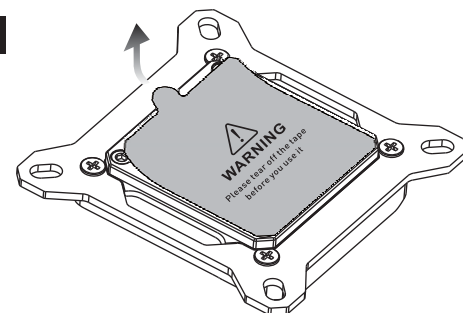
#### STEP 1



#### STEP 2



#### STEP 3

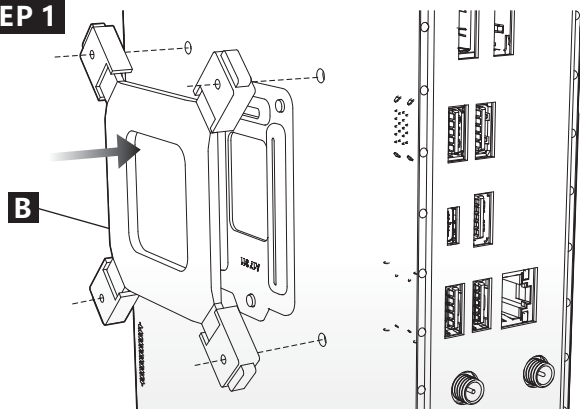


## Installation Steps

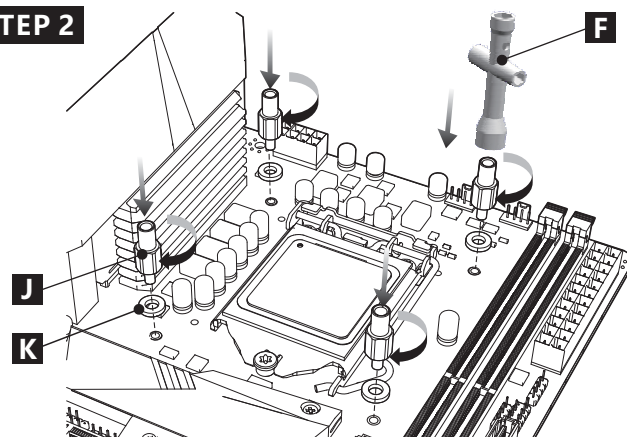
安装步骤

LGA115X/1200/1700/1851

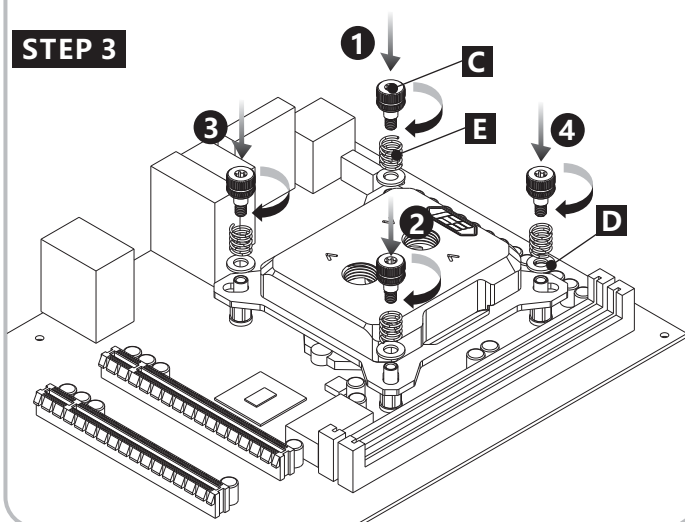
### STEP 1



### STEP 2



### STEP 3

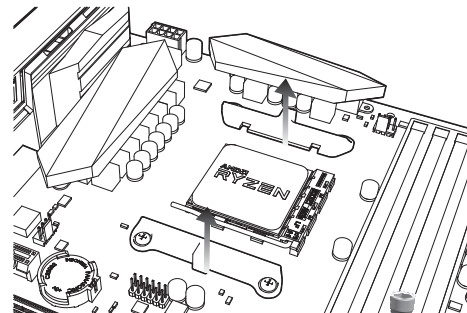


## Installation Steps

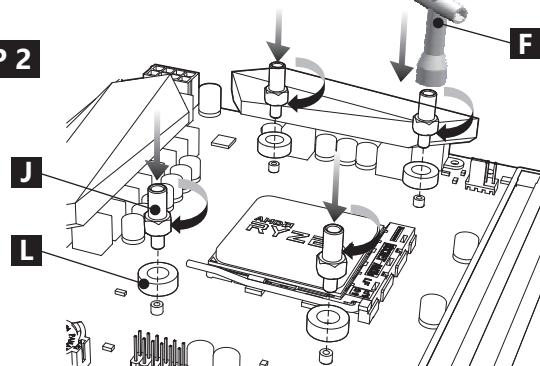
安装步骤

AMD

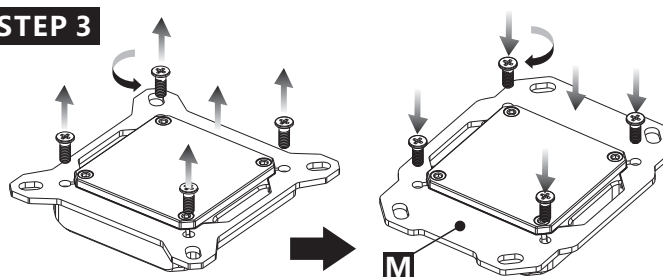
### STEP 1



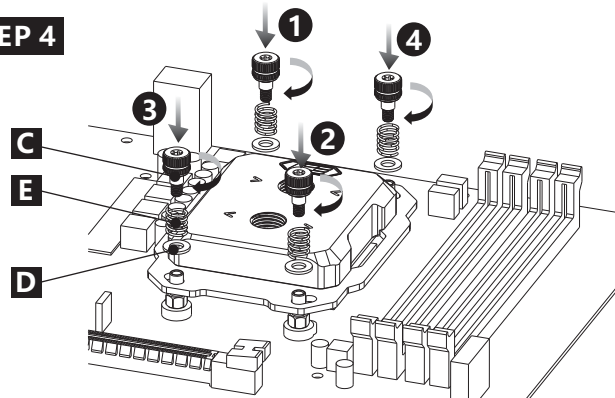
### STEP 2



### STEP 3



### STEP 4

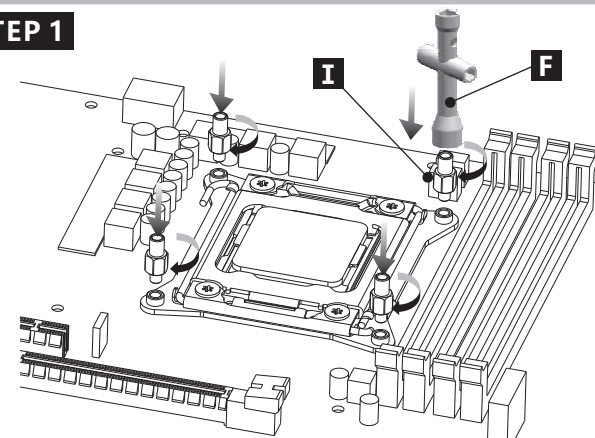


## Installation Steps

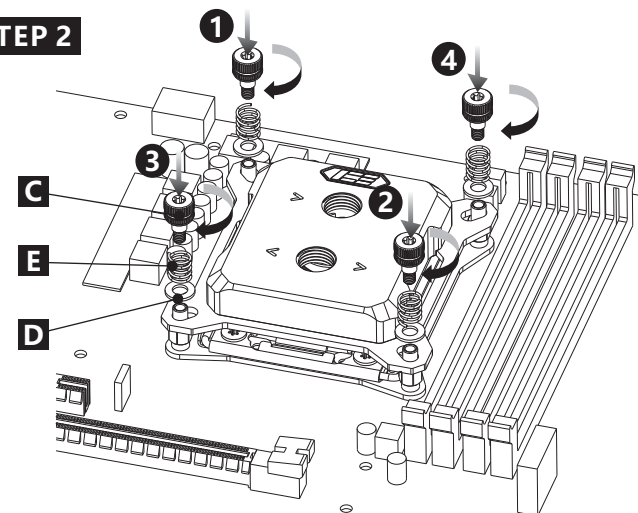
安装步骤

LGA20XX

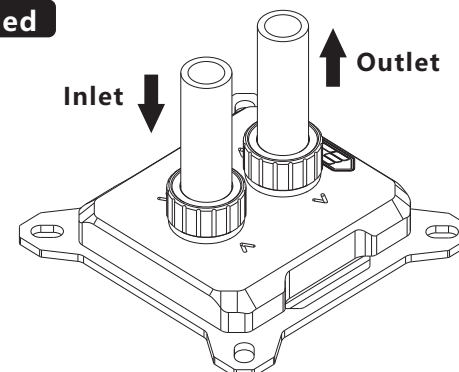
### STEP 1



### STEP 2



### Finished



Fittings and tube not included!